

# **InstallPALm**

version 1.0 Beta  
February 10, 1998

## **Creating Installs using InstallPALm**

ufp  
All Rights Reserved

## Table of Contents

Table of Contents.....	2
Registered versus Non-Registered Operation .....	3
System Requirements .....	3
Basic Operation.....	3
The SETUP.INI file.....	5
Uninstall Operation.....	7
Command Line Options .....	7
Additional Information .....	7

## Registered versus Non-Registered Operation

The non registered version of InstallPALm will not actually perform any of the operations discussed in this manual. The operations will be logged but not actually performed. In this way, a potential application designer can see exactly what InstallPALm will do on a user's system, but the program will not actually do anything. The logfile is created in the Pilot Desktop directory and will have the name <AppName>.LOG where *AppName* is the name specified in the [root] section of the SETUP.INI as the Application entry value. The registered version also has the option to create a log file rather than perform the actual installation through a command line option in order to test the install before actually copying files or making registry entries.

## System Requirements

InstallPALm will only operate in Windows 95, Windows 98 or Windows NT (future operating systems may or may not work with this version, but the latest version of InstallPALm will be up to date with the latest and greatest). The user interface also requires COMCTL32.DLL which is the Common Control Library standard with these operating systems. Window managers other than Explorer may not work and you will want to be aware of this before distributing your application, especially to foreign countries.

The memory footprint of the executable which parses the script and performs the installation is very small, only about 30-40K. Every effort has been made to keep memory usage, disk space and processor time to a minimum.

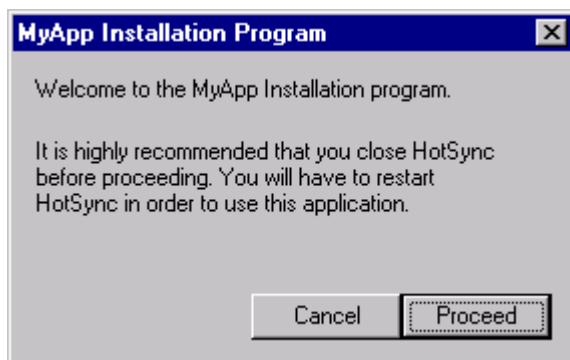
This information only pertains to the Beta version:

*The only InstallPALm file that is copied to the user's system is USERDAT.DLL with a size of about 8K. This file is required and must be copied to the PalmPilot desktop directory for the installation to function. This requirement will be removed in the release version of InstallPALm.*

In calculating the disk space required for your application, you must of course, consider the size of the components of your application.

## Basic Operation

InstallPALm is quick and requires relatively little user intervention. Because it is multithreaded, the various operations it performs, including copying files and adding keys to the registry, happen concurrently. InstallPALm was designed with the idea that the install should happen quickly and do the right thing™ without asking a lot of questions.



InstallPALm will read the SETUP.INI file that you have created to get the Application Name. It uses this name to fill in the user interface on the first screen. The first screen will inform the user that they are installing your application and that it is good idea to close the HotSync Manager if it is already running. They have the option to Cancel the install which exits the InstallPALm process completely or Proceed.

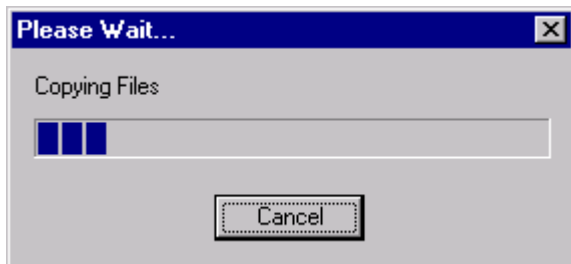
After the user presses Proceed, InstallPALm gathers the necessary information from the registry about the location of the Pilot Desktop software. If the Pilot Desktop software is not found, the user will be asked to reinstall the Pilot Desktop software and InstallPALm will exit. InstallPALm will look for the newer Pilot Desktop software under the registry key:

HKEY\_CURRENT\_USER\Software\U.S. Robotics\Pilot Desktop

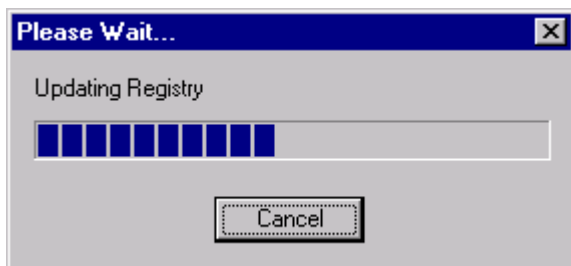
as well as the older Pilot software under the registry key:

HKEY\_CURRENT\_USER\Software\Palm Computing\Pilot Desktop

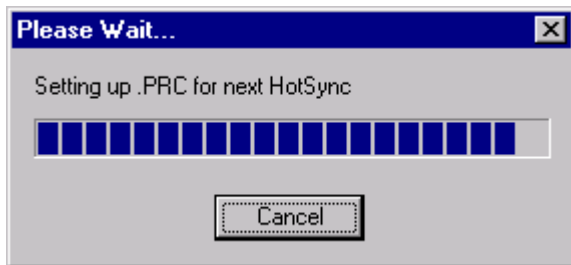
After determining the location of the Pilot Desktop software, InstallPALm will try to close the HotSync Manager if it is running. It makes no check to determine if this operation succeeds.



At this point InstallPALm has all the information it needs to begin. InstallPALm starts the install by reading the SETUP.INI [files] section to determine the files that need to be copied to the Pilot Desktop directory on the user's host machine. The file copy operation proceeds in its own separate thread.



Next, the [registry] section of the SETUP.INI file is read to determine the registry entries that need to be added. This also proceeds in its own thread.



Next, the [install] section is read to determine the files that need to be copied to the user's private install directory and the appropriate registry entries are made to alert the HotSync Manager that there are files to be installed to the PalmPilot device during the next HotSync™. Finally, the [readme] section is read to display a file using NOTEPAD.EXE, and the install exits quietly. The user must close the readme file manually.

## The SETUP.INI file

The SETUP.INI file is what drives the installation. In this file you specify the name of your application to be used in the user interface of InstallPALm, the files you want copied to the user's machine, the registry entries you want made and the files you want prepared for installation on the PalmPilot device. There are five sections to the SETUP.INI file as described below.

The [root] section:

The [root] section of the SETUP.INI file is where information specific to your application is specified. The name of your application is specified using the Application key and then the name you want used. For example:

```
[root]
Application=MyApp
```

The [files] section:

The [files] section of the SETUP.INI is used to specify the files you want copied to the user's host machine. Specifically the files specified in this section will be copied to the directory where the Pilot Desktop software is installed. Typically this directory will be something like C:\Program Files\Pilot Desktop. To use this section, list the files you want copied. For example:

```
[Files]
myapcn20.dll
userdat.dll
```

If you want files to be prepared for installation on the PalmPilot device during the user's next HotSync™ you must copy over the file USERDAT.DLL as shown above. This file is part of the InstallPALm software and must be included in order to use the auto HotSync™ feature. It does not matter in what position this file is referenced in the [files] section, but it must be present.

The [registry] section:

The [registry] section is where the modifications to the host machine's registry are made. These modifications are made under the registry key:

```
HKEY_CURRENT_USER\Software\U.S. Robotics\Pilot Desktop\Application<AppName>
```

where *AppName* is the application name specified in the [root] section described above. Each entry in this section will be added to the registry as a separate keyname and value. An example of this section:

```
[Registry]
Conduit=myapcn20.dll
Name=MyApp
Module=-unused-
Creator=23456789
Priority=00000002
Remote0=MyAppDB
File0=-unused-
Directory=MyAppDir
Integrate=00000000
```

The [install] section:

The [install] section is used to prepare files for installation during the user's next HotSync™. The files listed in this section will be copied to the user's private Install directory under the Pilot Desktop directory. A typical

directory might be C:\Program Files\Pilot Desktop\<>UserName>\Install. If the Install directory under the user's directory does not exist, InstallPALm will create the directory. In addition, InstallPALm will create the necessary registry keys to inform the HotSync Manager that there are files to be installed during the next HotSync™. An example of this section:

```
[Install]
myapp.prc
myapp.pdb
```

The [readme] section:

The [readme] section has one and only one entry. The entry will be the file displayed at the end of the install using the ubiquitous notepad. This file must be an ASCII file in DOS text format to be displayed correctly. The file will be displayed as a separate process and InstallPALm will terminate after displaying this file. An example of this section:

```
[readme]
myapp.txt
```

None of the sections of the SETUP.INI are mandatory. InstallPALm will ignore sections that do not exist or that do not have entries. Single line comments are allowed in the SETUP.INI file. Comments must start at the beginning of the line with a semicolon (;) and end with a carriage return. No intraline comments are allowed.

## Uninstall Operation

Uninstall mode will perform the opposite of the regular mode, removing files and registry entries from the user's system. InstallPALm cannot remove files that have already been installed on the PalmPilot device. Nothing is done with the readme file and no attempt is made to close the HotSync Manager. The mode is entered on the command line with the `-u` parameter to SETUP.EXE.

The uninstall operation does not remove the Install directory under the user's private directory even if it was created by the InstallPALm installation. When the `-u` option is specified the first screen of the InstallPALm program is not displayed.

## Command Line Options

The command line options available with InstallPALm allow the install to be run in Log mode or to run in Uninstall mode.

Log mode will create a log file with all of the operations that would have been performed without actually executing any of the operations. This includes closing HotSync Manager, copying files, adding registry entries, and displaying a readme file. This mode is the default mode in the unregistered version of InstallPALm. In the registered version of InstallPALm this mode is entered on the command line with the `-l` (that is the lowercase el rather than a one) parameter to SETUP.EXE.

Uninstall mode will perform the opposite of the regular mode, removing files and registry entries from the user's system. InstallPALm cannot remove files that have already been installed on the PalmPilot device. No attempt is made to close the HotSync Manager nor does InstallPALm attempt to make the user forget everything he or she read in the readme. The mode is entered on the command line with the `-u` parameter to SETUP.EXE.

## Additional Information

This information does not pertain to the Beta version:

*There is additional entry in the [root] section of the SETUP.INI file called RestartHotSync. If it does not exist, or if its value is zero, InstallPALm will not make an attempt restart the HotSync Manager at the end of the installation.*

*If the value of RelaunchHotSync is one, InstallPALm will make an attempt to relaunch the HotSync Manager if and only if it detected that the HotSync Manager was running at the beginning of the install and an attempt was made to close it.*

*It is not recommended that this entry be used if a conduit is being installed. The HotSync Manager must be restarted after the registry entries for the conduit are installed. If InstallPALm does this for the user it may not be apparent and could possibly cause problems. We recommend that restarting the HotSync Manager is left up to the user. You may feel, however, that the user should not have to do even this simple task and the entry is there for you to use. The user interface does not change to reflect the addition of this entry to the SETUP.INI.*

For late breaking news please see <http://www.ufp.com/palm.html> or for questions or comments send email to [installpalm@ufp.com](mailto:installpalm@ufp.com)